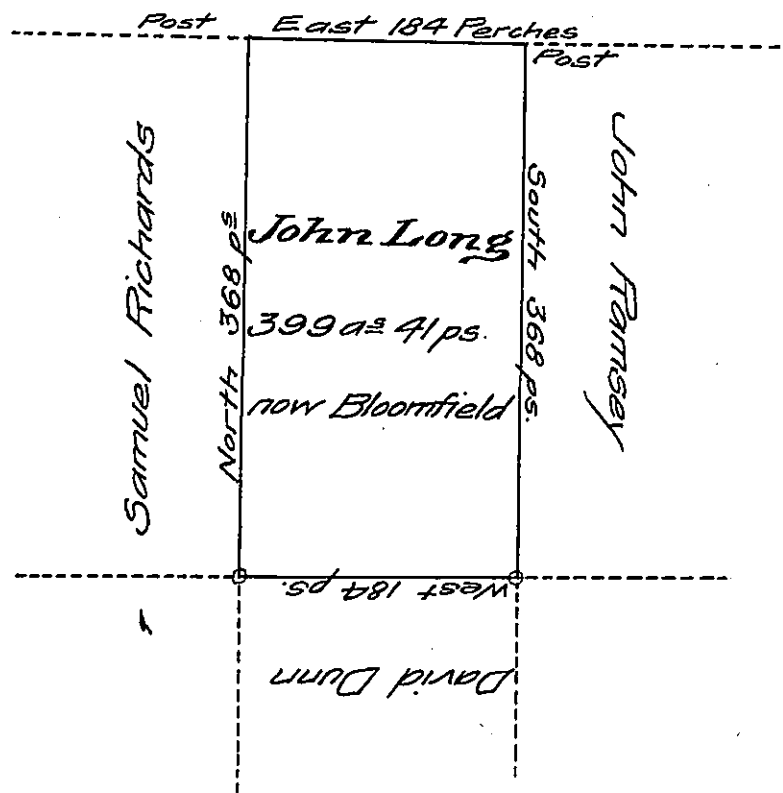


Joseph Long



Situate on the East Side of French Creek in Allegheny County containing 399 acres 41 perches and allowance of Six per cent for roads and so forth Surveyed the 26<sup>th</sup> day of May 1795 for John Long in persuance of his Improvement Bearing date the 25<sup>th</sup> day of May 1795.

I Certify the above to be a true copy of the Original as entered in Book A page 109 Witness my hand and seal at Meadville this 10<sup>th</sup> day of January A.D. 1850

A. W. Mumford } Dep. SR  
of Crawford County



IN TESTIMONY that the above is a copy of the original remaining on file in the Department of Internal Affairs of Pennsylvania, made conformably to an Act of Assembly approved the 16<sup>th</sup> day of February, 1833, I have hereunto set my Hand and caused the Seal of said Department to be affixed at Harrisburg, this nineteenth day of November 1907.

*Henry Howard*  
Secretary of Internal Affairs.